

## Recombinant Human UBE2I protein

Cat. No. UBE2I -03H Lot. No. (See product label)

### SPECIFICATION

|                         |  |
|-------------------------|--|
| <b>Product Overview</b> | Recombinant Human UBE2I protein was expressed in Escherichia coli.   |
| <b>Species</b>          | Human  |
| <b>Source</b>           | E.coli   |
| <b>ProteinLength</b>    | 171  |
| <b>Description</b>      | <p>SUMO-Conjugating Enzyme UBC9 belongs to the ubiquitin-conjugating enzyme family and is encoded by the UBE2I gene in humans. The ubiquitin-conjugating enzymes, also known as E2 enzymes and more rarely as ubiquitin-carrier enzymes, take part in the second step in the ubiquitination reaction. In this reaction, E1 activates the ubiquitin by covalently attaching the molecule to its active site cysteine residue. The activated ubiquitin is then transferred to an E2 cysteine and then the E2 molecule binds E3 via a structurally conserved binding region. The UBC9 accepts the ubiquitin-like proteins SUMO1-4 from the UBLE1A-UBLE1B E1 complex and catalyzes their covalent attachment to other proteins with the help of an E3 ligase such as RANBP2 or CBX4. Additionally, It takes parts in catalysis the formation of poly-SUMO chains, sumoylation of FOXL2 and KAT5, and the segregation of nuclear architecture and chromosome.</p> |
| <b>Form</b>             | 0.2µm Filtered concentrated solution in 50 mM HEPES, pH 7.6, with 125 mM NaCl, 10 % Glycerol, 1 mM DTT.  |
| <b>Molecular Mass</b>   | Approximately 19.5 kDa, a single non-glycosylated polypeptide chain containing 158   |

 Tel: 1-631-559-9269 1-516-512-3133

 Email: [info@creative-biomart.com](mailto:info@creative-biomart.com)  Fax: 1-631-938-8127

 45-1 Ramsey Road, Shirley, NY 11967, USA

|                    |   |
|--------------------|---|
|                    | amino acids (a.a.) of human UBE2I/UBC9 and 8 a.a. vector sequence including 6 x His tag at N-terminus.  |
| <b>AA Sequence</b> | MHHHHHHAMGTLNMSGIALSRLAQERKAWRKDHPFGFVAVPTKNPDGTMNLMNW<br>ECAIPGKKGTPWEGGLFKLRMLFKDDYPSSPPKCKFEPPLFHPNVYPSGTVCLSILE<br>EDKDWRPAITIKQILLGIQELLNEPNIQDPAQAEAYTIYCQNRVEYEKRVRAQAKKFA<br>PS                       |
| <b>Endotoxin</b>   | Less than 1 EU/g of rHuUBC9, His as determined by LAL method.   |
| <b>Purity</b>      | >95% by SDS-PAGE and HPLC analysis.   |
| <b>Storage</b>     | Use a manual defrost freezer and avoid repeated freeze-thaw cycles. 6 months from date of receipt, -20 to -70 centigrade as supplied. 3 months, -20 to -70 centigrade under sterile conditions after opening. |

## GENE INFORMATION

|                        |   |
|------------------------|---|
| <b>Gene Name</b>       | UBE2I   |
| <b>Official Symbol</b> | UBE2I   |
| <b>Synonyms</b>        | UBE2I; ubiquitin-conjugating enzyme E2I; ubiquitin conjugating enzyme E2I (homologous to yeast UBC9) , ubiquitin conjugating enzyme E2I (UBC9 homolog, yeast); SUMO-conjugating enzyme UBC9; UBC9; SUMO-protein ligase; SUMO-1-protein ligase; ubiquitin-protein ligase I; ubiquitin carrier protein 9; ubiquitin carrier protein I; ubiquitin-protein ligase E2I; ubiquitin conjugating enzyme 9; ubiquitin-conjugating enzyme UbcE2A; ubiquitin-like protein SUMO-1 conjugating enzyme; ubiquitin-conjugating enzyme E2I (UBC9 homolog, yeast); ubiquitin-conjugating enzyme E2I (homologous to yeast UBC9); P18; C358B7.1; |

 Tel: 1-631-559-9269 1-516-512-3133

 Email: [info@creative-biomart.com](mailto:info@creative-biomart.com)  Fax: 1-631-938-8127

 45-1 Ramsey Road, Shirley, NY 11967, USA

**Gene ID** 7329

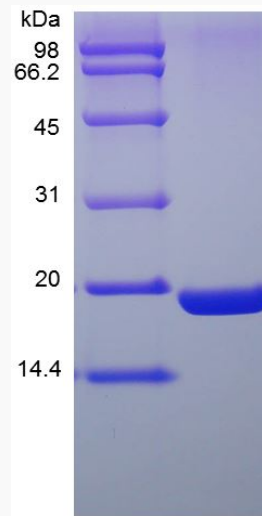
**mRNA Refseq** NM\_003345

**Protein Refseq** NP\_003336

**MIM** 601661

**UniProt ID** P63279

**SDS-PAGE of UBE2I  
-03H**



 Tel: 1-631-559-9269 1-516-512-3133

 Email: [info@creative-biomart.com](mailto:info@creative-biomart.com)  Fax: 1-631-938-8127

 45-1 Ramsey Road, Shirley, NY 11967, USA